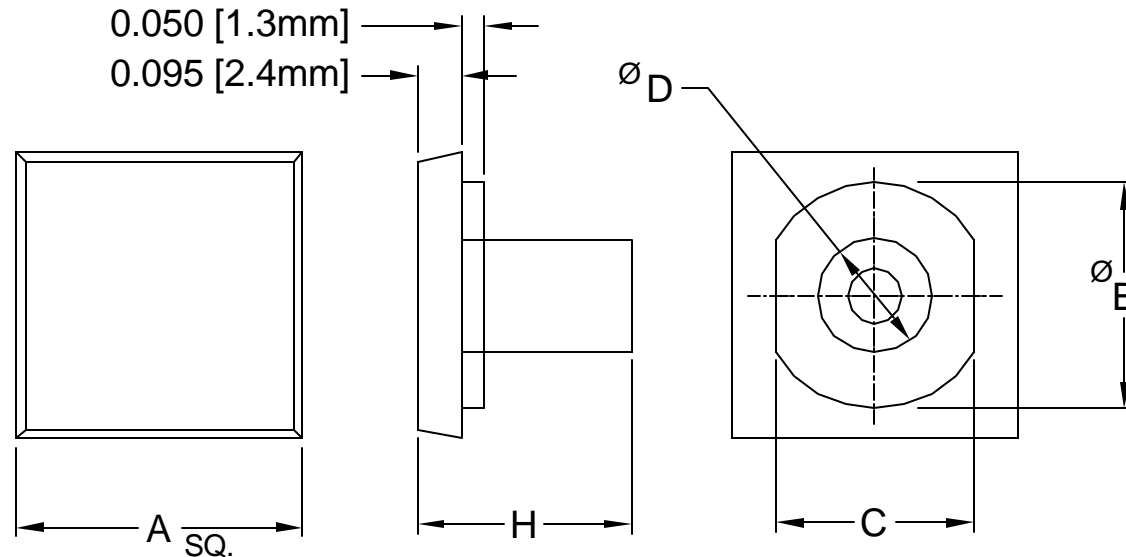


REV.	DESCRIPTION	DATE	APPROVED
A	Engineering Update w/o Changes	02/13/04	M. C.
B	Material Update.	02/10/06	M. C.
C	Changed Material from 43-BK to 08-BK.	06/27/07	M. C.





PART NO.	A	B	C	D	H	TYPE	CLIP NO.
14-11	0.375 (9.5) SQ.	0.187 (4.7)	0.155 (3.9)	0.125 (3.2)	0.47 (11.9)	SMC	SSC-1
14-12	0.375 (9.5) SQ.	0.245 (6.2)	0.215 (5.5)	0.125 (3.2)	0.47 (11.9)	MINI COAX.	SSC-1
14-13	0.375 (9.5) SQ.	0.276 (7.0)	0.235 (6.0)	0.125 (3.2)	0.47 (11.9)	SMC.M.COAX.	SSC-1
14-21	0.625 (15.9) SQ.	0.360 (9.1)	0.310 (7.9)	0.250 (6.4)	0.47 (11.9)	TNC, BNC	BPC-125
14-22	0.625 (15.9) SQ.	0.430 (10.9)	0.375 (9.5)	0.250 (6.4)	0.47 (11.9)	TNC, COAX.	BPC-125
14-23	0.625 (15.9) SQ.	0.495 (12.6)	0.430 (10.9)	0.250 (6.4)	0.47 (11.9)	BNC, SHV	BPC-125
14-31	0.812 (20.6) SQ.	0.625 (15.9)	0.520 (13.2)	0.250 (6.4)	0.58 (14.7)	N SERIES	BPC-125L
14-32	0.812 (20.6) SQ.	0.750 (19.1)	0.630 (16.0)	0.250 (6.4)	0.58 (14.7)	TWIN VIDEO	BPC-125L

2. MATERIAL: ABS, 94V-0, BLACK. BIVAR MATERIAL CODE 08-BK.

GE PLASTICS ABS, CYCOLAC KJW, 94V-0, BLACK

1. GENERAL SPECIFICATIONS: BIVAR MOLDED COMPONENT SPECIFICATION BV00-E101.

STANDARD TOLERANCE ( UNLESS OTHERWISE SPECIFIED )		 4 THOMAS, IRVINE, CA. 92618 TEL: (949) 951-8808 FAX: (949) 951-3974	
DECIMALS	ANGULAR		
.X ±.1	X° ±1°	 <b>TITLE:</b> CONNECTOR CUT-OUT COVER	
.XX ±.01			
.XXX ±.005			
DESIGNED: <b>Ty Yin</b>	DATE: <b>02/13/04</b>	<b>PART NO:</b> 14-XX	REVISION: <b>C</b>
CHECKED: <b>D. Green</b>	DATE: <b>02/13/04</b>	<b>CAGE CODE :</b> 32559	<b>SHEET # 1 OF 1</b>
CAD GENERATED DOCUMENT, DO NOT MEASURE DRAWING.			