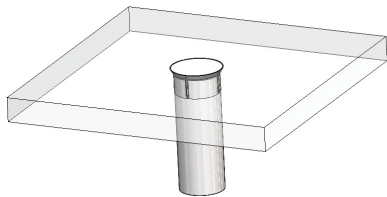


LIGHT PIPE OPTIONS WHEN SPACE IS LIMITED

Innovative techniques and materials to optimize light pipe routing and PCB layout.

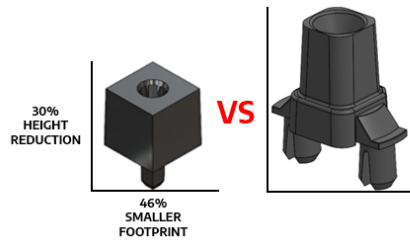
PLPC Series

Smooth Flush Mount
Panel Appearance



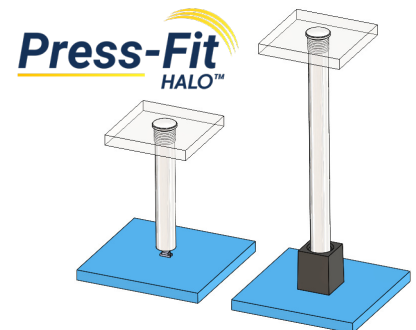
SZSF System

Small Footprint
Adapter



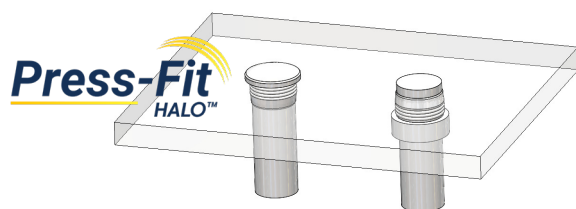
UHF System

Silicone Short Distance
(Adapter Optional)



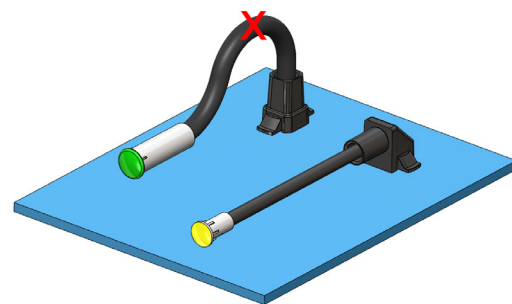
GLP Series

Streamlined
IP Rated Protection



SZR System

Tight Angle Adapter



Light Pipe Solutions Developed to Solve Modern Application Challenges

SZSF Series

Small Footprint Flexible Light Pipe

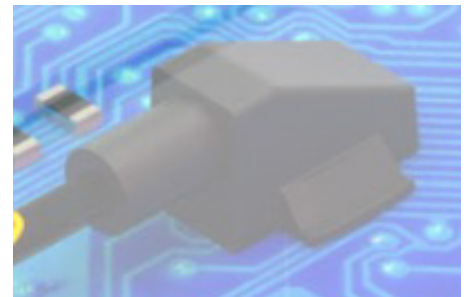
Board placement inside crowded component areas with light routing flexibility.



SZR Series

Low Profile Flexible Light Pipe

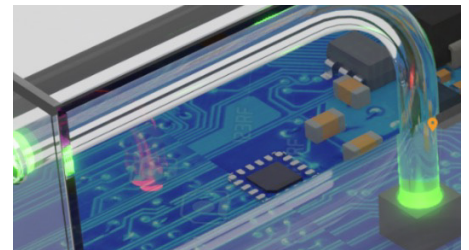
Features patented ZeroLightBleed™ tight angle adapter for use where height is limited.



UHF Series

Clear Silicone Flexible Light Pipe

Press-Fit Halo™ IP67 protection and wide-temperature range for rugged performance in harsh environments.



GLP Series

IP54 Press-Fit Halo™ Rigid Light Pipe

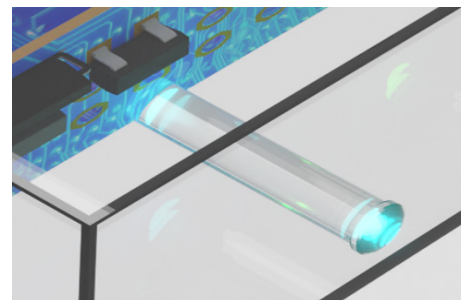
Upgrade PLP1, PLP2 designs with simplified installation and no additional gaskets or hardware needed.



PLPC Series

Flush Mount Rigid Light Pipe

Smallest lens diameter and countersink panel mounting. Ideal for use with membrane overlays and small devices.



[CLICK HERE TO EXPLORE SPACE-SAVING LIGHT PIPES](#)